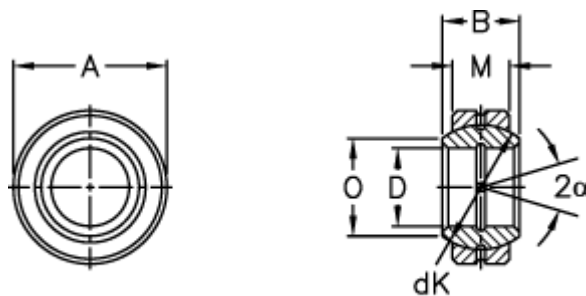


Article number: 03500080

Description: Fluro Rod end GE 80E

Measures



Str. 6-12 uden smørerille

A	= 120 0 -0,015	Tilt angle = 6
B	= 55	Weight = 2200
D	= 80 0 -0,015	
dK	= 105	
Dynamic load C (kN)	= 400	
M	= 45	
O	= 89.4	
Static load C0 (kN)	= 2000	